

TACO[®]

MARINE



PONTOON PRODUCTS

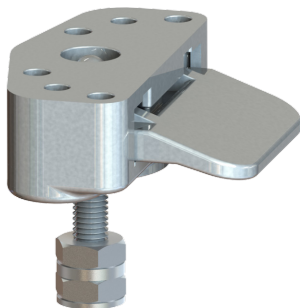
DURABILITY & SIMPLICITY



Leading the way in innovation and performance.

SUNDECK LATCHES

Low-profile, concealed latches available in Type-316L stainless steel or nylon. The Sundeck Latch is perfect for an array of applications, including engine hatches, access panels, cabinet doors, dock boxes and folding seats. This latch features a non-slip grip that ensures a secure lift and comes with an adjustable anchoring stud.



STAINLESS STEEL SUNDECK LATCH
F16-0339POL-1

- ▶ Made entirely from Type-316L stainless steel



NYLON SUNDECK LATCH
F45-0339

- ▶ Available in black or white nylon with a stainless steel Type-316L locking pin and bolt

FENDER LOCKS

TACO Marine Fender Locks are designed to make docking as effortless as possible. Simply set your fender line to your preferred length, attach to the fender lock and insert into the fitting. When you're ready to set off, simply push the button, remove the pin and stow.



ALUMINUM QUICK RELEASE FENDER LOCK
F16-0186

- ▶ Designed for 1" to 1-1/4" square tube
- ▶ Manufactured from 6000-series Aluminum
- ▶ Features a 1" diameter button
- ▶ Available finishes include satin anodized, black hard coat anodized and brite dip
- ▶ Mounting applications fastens from the bottom of the square tube



PONTOON FENDER LOCK
F16-0220

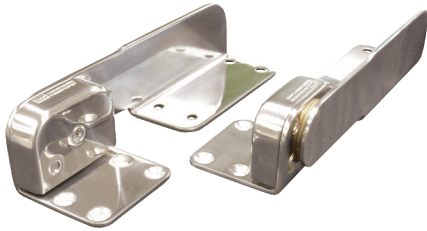
- ▶ Designed for 1" to 1-1/4" square tube
- ▶ Manufactured from Type-316L stainless steel
- ▶ Features a 1" diameter button
- ▶ Nylon ring washer to separate dissimilar metals
- ▶ Mounting applications fastens from the bottom of the square tube

RATCHET HINGES



COMMAND RATCHET HINGES

Constructed from high-grade stainless steel and brass, our Command Ratchet Hinges are ideal for sunpads, bolsters and lounge backrests. The 9-3/8" heavy-duty specialty hinge features a 15° locking inclination and ratchets up to four positions. The 18-1/2" heavy-duty specialty hinge features one locking position at 62.5°. Patent numbers US 8,875,347 and US 9,249,827.



COMMAND RATCHET HINGE 9-3/8"
H25-0016

- ▶ Highly polished marine-grade stainless steel Type-304
- ▶ All brass bearings for durability
- ▶ Meets ABYC H-31 standards class B* application, 250 ft.-lb. of torque load for pair
- ▶ 15° locking inclination increments starting at 30°
- ▶ Designed for up to 4" thick cushions
- ▶ Returns to horizontal position at 100°



COMMAND RATCHET HINGE 18-1/2"
H25-0023

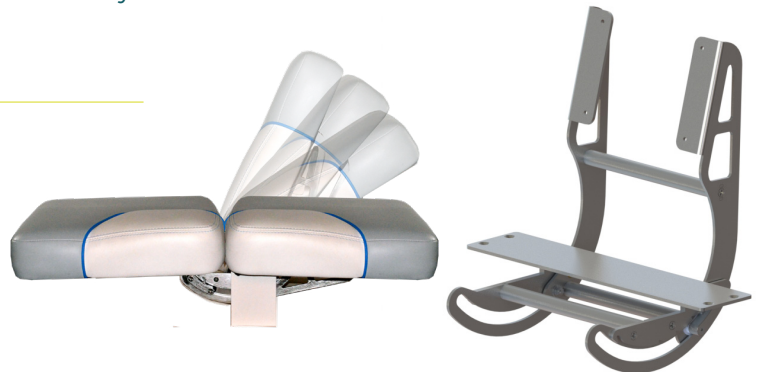
- ▶ Highly polished marine-grade stainless steel Type-316L
- ▶ Meets ABYC H-31 standards class B* application, 500 ft.-lb. of torque load for pair
- ▶ One locking position at 62.5°
- ▶ Designed for seat backs up to 22" long
- ▶ Single or double seat capacity

HIDEAWAY RATCHET HINGE

Versatile, robust and concealed describe the TACO Marine® Hideaway Ratchet Hinge. Transforming a standard seat cushion into a Class-A backrest allows for versatile seating and deck options. The distinctive below-deck design provides functional, adjustable hinge operation without visible hardware. Under-cushion installation permits long runs of backrests to operate in independent sections. Adaptability to varied seatback widths also allows for unique applications, such as fold-down transom seats, hideaway tables and access

H25-0030

- ▶ Smooth operation with multiple backrest positions
- ▶ Effortlessly return backrest to lounging position
- ▶ Three locking positions at 35°, 50° and 65°
- ▶ Easily modified to accommodate more or different angles by changing side plates
- ▶ Mounts to edge of bulkhead with the majority of hinge below deck

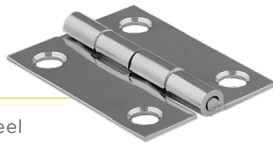


DECK & CONTINUOUS HINGES



Strong and durable, our comprehensive line of stainless-steel hinges is corrosion resistant and rust proof. Built to withstand the harsh elements of the marine environment, our Type-304 and 316L stainless-steel hinges provide years of trouble-free use and are ideal for a multitude of pontoon applications.

BUTT HINGE 1-1/2" X 2" H20-0112



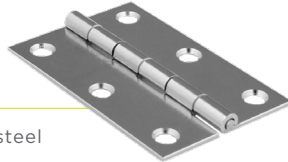
- Type-304 stamped stainless steel
- .060" gauge for #8 screw
- Electro-polish finish
- Available in both standard and deluxe

BUTT HINGE 2" X 2" H20-0200



- Type-304 stamped stainless steel
- .060" gauge for #8 screw
- Electro-polish finish
- Available in both standard and deluxe

BUTT HINGE 2" X 3" H20-0230



- Type-304 stamped stainless steel
- .060" gauge for #8 screw
- Electro-polish finish
- Available in both standard and deluxe

BUTT HINGE 3" X 3" H20-0300



- Type-304 stamped stainless steel
- .060" gauge for #10 screw
- Electro-polish finish
- Available in both standard and deluxe

HATCH HINGE 2" X 1-1/2" H21-0232



- Type-304 stamped stainless steel
- .060" gauge for #8 screw
- Electro-polish finish
- Available in standard, classic and deluxe

HATCH HINGE 2-3/4" X 1-1/2" H21-0234



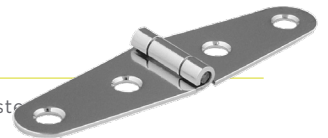
- Type-304 stamped stainless steel
- .060" gauge for #8 screw
- Electro-polish finish
- Available in standard, classic and deluxe

BUTT HINGE 1-5/16" X 1-1/2" H21-0132



- Type-304 stamped stainless steel
- .060" gauge for #8 screw
- Electro-polish finish
- Available in both standard and deluxe

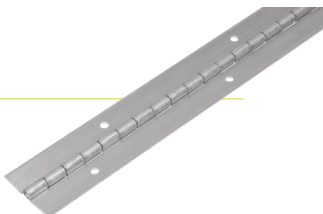
STRAP HINGE 4" X 1-1/6" H21-0434



- Type-304 stamped stainless steel
- .060" gauge for #8 screw
- Electro-polish finish
- Available in both standard and classic

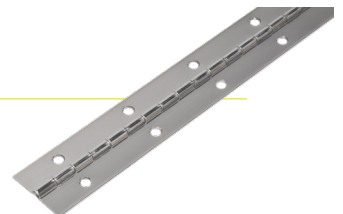
ALUMINUM CONTINUOUS HINGES

- Three widths available, including 1-1/4", 1-1/2" and 2"
- Comes in 72" long pieces
- Both .060" and .040" gauge available
- Mill finished

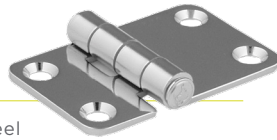


STAINLESS STEEL CONTINUOUS HINGES

- Five widths available from 1-1/16" to 3"
- Comes in 72" and 92" lengths
- Both .040" and .074" gauge available
- Annealed and polished finishes



BUTT HINGE 1-1/4" X 1-1/2" H22-1550



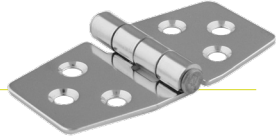
- ▶ Type-304 stamped stainless steel
- ▶ .078" gauge for #8 screw
- ▶ Electro-polish finish
- ▶ Available in both standard and deluxe

HEAVY GAUGE HATCH HINGE 3" X 3" H23-0092



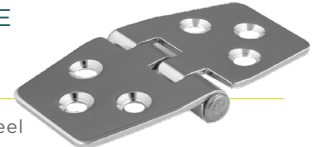
- ▶ Type-316L cast stainless steel
- ▶ .078" gauge for #12 screw
- ▶ Deluxe-polish finish
- ▶ Available in standard, classic and deluxe

HEAVY GAUGE HATCH HINGE 3" X 1-1/2" H23-1490



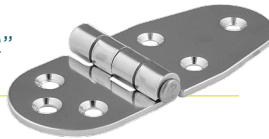
- ▶ Type-316L cast stainless steel
- ▶ .078" gauge for #10 screw
- ▶ Deluxe-polish finish
- ▶ Available in standard, classic and deluxe

HEAVY GAUGE REVERSE PIN HATCH HINGE H23-1499



- ▶ Type-316L cast stainless steel
- ▶ .078" gauge for #10 screw
- ▶ Deluxe-polish finish
- ▶ Available in standard, classic and deluxe

HEAVY GAUGE HATCH HINGE 3-3/4" X 1-1/2" H23-4000



- ▶ Type-316L cast stainless steel
- ▶ .098" gauge for #10 screw
- ▶ Deluxe-polish finish
- ▶ Available in standard, classic and deluxe

HEAVY DUTY STRAP HINGE 4" X 1" H30-1010



- ▶ Type-316L cast stainless steel
- ▶ .125" gauge for #10 screw
- ▶ Deluxe-polish finish
- ▶ Available in both standard and classic

CONCEALED FASTENERES DECK HINGE 1-1/2" X 3" H30-1044



- ▶ Type-316L stainless steel
- ▶ .125" gauge for #8 screw
- ▶ Deluxe-polish finish

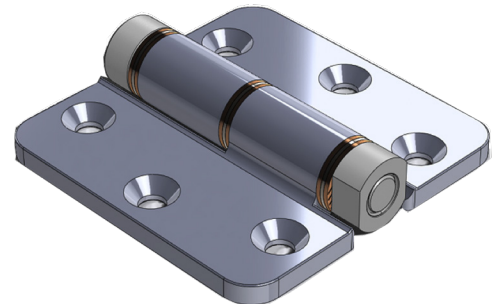
CONCEALED FASTENERES DECK HINGE 2" X 4" H30-1045



- ▶ Type-316L stainless steel
- ▶ .125" gauge for #10 screw
- ▶ Deluxe-polish finish

FRICTION HINGES

Our new line of Friction Hinges is the latest in our TACO hinge technology! Constructed from high-grade-cast stainless-steel leafs and bronze compression washers, our Friction Hinges provide smooth resistance for hatches, doors, lids and much more. These hinges eliminate the need for gas shocks and springs, which take up valuable storage space.



- ▶ Choose from four different Friction Hinges, including a reversed pin options
- ▶ Cast-stainless-steel Type-316L hinge leafs and knuckle with a superior fit and mirror-polish finish
- ▶ Friction washers provide consistent resistance and smooth operation
- ▶ Each leaf has three countersunk holes for #10 fasteners
- ▶ Friction resistance from 0° to 90°

LED LIGHTS

NAVIGATION & DECK LIGHTING



Our LED lights are impact-resistant, waterproof for non-submersion and tested to meet the highest standards put in place by the United States Coast Guard. Highly efficient and hardwired for a low draw of less than 1 amp, our LED lights provide thousands of hours of operation.

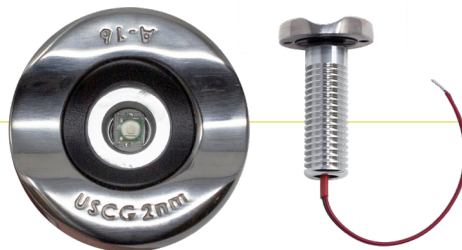
SURFACE MOUNT LED SIDE NAVIGATION LIGHT SET 1-3/4" F38-6610D

- ▶ USCG-approved for up to 2 NM
- ▶ Provides 112.5° of unobstructed views with less glare
- ▶ Type-316L stainless steel and a water-resistant IP68 rating
- ▶ 3-watt red and green LED with a low draw of only .6 amps that compares to 10-watt incandescent light



SURFACE MOUNT LED ISDE NAVIGATION LIGHT SET 1-3/8" F38-6610G

- ▶ USCG-approved for up to 2 NM
- ▶ Provides 112.5° of unobstructed views with less glare
- ▶ Type-316L stainless steel and a water-resistant IP68 rating
- ▶ 3-watt red and green LED with a low draw of only .6 amps that compares to 10-watt incandescent light



4-LED DECK LIGHT, PIPE MOUNT 5-1/2" F38-8800BXZ

- ▶ USCG, ISO and SAE certified for Ignition Protection*
- ▶ LED chips are silicone potted for IP67-waterproof (non-submersion) rating
- ▶ Powerful 700-lumen output with a 100° spread beam angle



4-LED DECK LIGHT, FLAT MOUNT 5-1/8" F38-8800/F38-8805

- ▶ USCG, ISO and SAE certified for Ignition Protection*
- ▶ LED chips are silicone potted for IP67-waterproof (non-submersion) rating
- ▶ Powerful 700-lumen output with a 100° spread beam angle
- ▶ Available in white polycarbonate housing



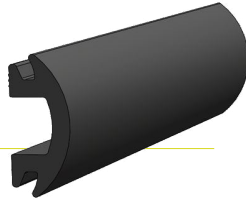
*USCG, ISO and SAE certified for Ignition Protection. Completely sealed lights have been tested in an explosive environment and exposed to an explosive atmosphere in high temperature that includes powering on-off 50 times without igniting the atmosphere at a temperature not exceeding 200-degrees C. These certificates demonstrate the ability to consistently provide product that meets statutory and regulatory requirements that assure customer satisfaction and safety. Ideal for use in engine rooms, battery compartments and anywhere fire safety is of most importance.

PONTOON RUB RAIL INSERTS



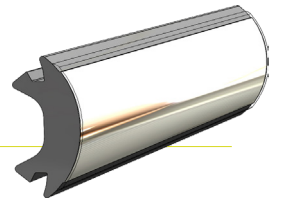
Streamline the appearance of your pontoon with our Vinyl and Stainless Steel Inserts. Our seamless Vinyl Inserts are available in a variety of colors, shapes and sizes for a precision fit. Using Types 304 and 316L marine-grade stainless steel with buffed and polished mirror finishes, our Stainless-Steel Rub Rail is the best choice for long-term value, corrosion resistance and appearance.

**FLEXIBLE VINYL INSERT,
1-1/4" X 1/2"**
V12-4144



- ▶ For use with flexible Rub Rail
- ▶ Soft PVC insert provides cushion effect to absorb impact

**FLEX CHROME INSERT,
1-5/8" X 5/8"**
V12-9873CP



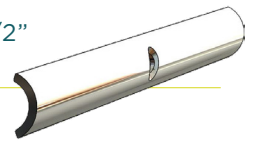
- ▶ Denser substrates provide more robust protection
- ▶ Authentic "chrome" finish
- ▶ Durable materials will provide years of maintenance-free service

**FLEX CHROME INSERT,
1" X 1-1/4"**
V12-9809CP



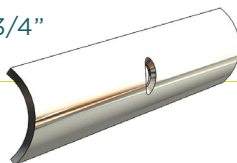
- ▶ Authentic "chrome" finish
- ▶ Durable materials will provide years of maintenance-free service

**STAINLESS STEEL
HOLLOW BACK RUB RAIL, 1/2"**
S11-4500



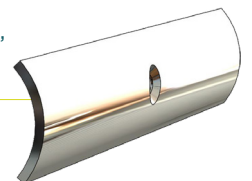
- ▶ Stainless steel Type-304
- ▶ Drilled and countersunk for #6 screws on 6" centers

**STAINLESS STEEL
HOLLOW BACK RUB RAIL, 3/4"**
S11-4511



- ▶ Stainless steel Type-304/316L
- ▶ Drilled and countersunk for #8 screws on 6" centers

**STAINLESS STEEL
HOLLOW BACK RUB RAIL, 1"**
S11-4650



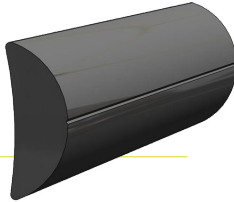
- ▶ Stainless steel Type-304/316L
- ▶ Drilled and countersunk for #10 screws on 6" centers

PONTOON RUB RAIL - RIGID VINYL



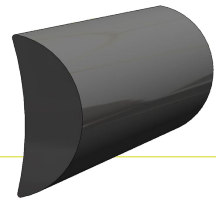
Streamline the appearance of your pontoon with our Vinyl and Stainless Steel Inserts. Our seamless Vinyl Inserts are available in a variety of colors, shapes and sizes for a precision fit. Using Types 304 and 316L marine-grade stainless steel with buffed and polished mirror finishes, our Stainless-Steel Rub Rail is the best choice for long-term value, corrosion resistance and appearance.

RIGID RUB RAIL, 1/2" X 5/8" V21-0456



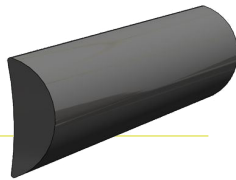
- ▶ Cuts and drills with standard woodworking tools
- ▶ Designed for use without an insert
- ▶ Drilled and countersunk for #8 screws on 6-inch centers
- ▶ Uses F90-0002 End Cap
- ▶ Requires heat for radius forming

RIGID RUB RAIL, 1-3/4" X 3/4" V21-0457



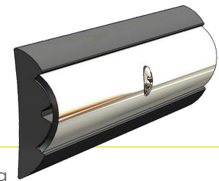
- ▶ Requires heat for radius forming
- ▶ Cuts and drills with standard woodworking tools
- ▶ Color and gloss level matched to gel coat blending rub rail with hull and deck
- ▶ Designed for use without an insert Ideal for work boats
- ▶ Drilled and countersunk for #8 on 6-inch centers. Use F90-0001 to cap off rail ends

RIGID RUB RAIL, 1" X 3/8" V21-0460



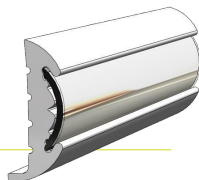
- ▶ Cuts and drills like wood
- ▶ Designed for use without an insert
- ▶ Drilled and countersunk on 6-inch centers
- ▶ Requires heat for radius forming

RIGID RUB RAIL, 1-1/4" X 3/8" V21-9947



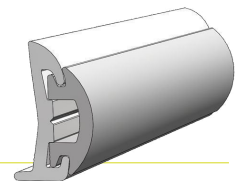
- ▶ Requires heat for radius forming
- ▶ Cuts and drills with standard woodworking tools
- ▶ Rigid vinyl rub rail with stainless steel insert S11-4511 (sold separately)
- ▶ Drilled and countersunk #8 screws on 8" centers

RIGID RUB RAIL, 1-5/8" X 3/4" V21-9811



- ▶ Hard durometer creates rigid-like look
- ▶ Continuous coil allows for one-piece installation without seams
- ▶ Tight radius bending can be made with little or no heating
- ▶ Accepts Flex Chrome Insert V12-9809 (sold separately)
- ▶ Drilled and for #8 screws countersunk on 6-inch centers

RIGID RUB RAIL, 1-1/2" X 5/8" V21-9678



- ▶ Color and gloss levels matched to gel coats blending rub rail with hull and deck
- ▶ Cuts and drills with standard woodworking tools
- ▶ Requires heat for radius forming
- ▶ Accepts Flexible Vinyl Insert (sold separately)
- ▶ Drilled for #8 screw on 8-inch centers

ROD HOLDERS & ACCESSORIES

At TACO Marine, we have the answer for your pontoon rod holder and rod storage needs. Our variety of rod holders provide you with the options needed to organize, store and fish efficiently. Additionally, Boaters love our maintenance-free Poly Accessories. These products are made from high-density polyethylene that is built to withstand the harsh marine environment.

1-, 2-, 3-, 4-ROD HANGER RACKS

F16-2700, F16-2751, F16-2753, F16-2752

- ▶ High-polished marine-grade stainless steel Type-316L
- ▶ Patented rod tip holder with spring-lock design locks rods in position
- ▶ Rod hangers feature concealed fasteners
- ▶ Pre-drilled, recessed mounting holes and beveled edges
- ▶ Durable, UV-stabilized white poly racks
- ▶ Weather-resistant, flush mount racks install easily
- ▶ Mount vertically, horizontally and overhead



3- & 4-ROD ALUMINUM POLY ROD RACK

F31-3103, F31-3104

- ▶ 3-, and 4-rod holders
- ▶ Slotted to lock-in rods/reels
- ▶ Form-fitted PVC white liner
- ▶ Convenient integrated slots for knife and plier
- ▶ Designed for light to medium tackle spinning rod/reel combos



STAND-OFF SURFACE MOUNT ROD HOLDERS

P04-011, P04-091 SERIES, P04-0111

- ▶ Front access hole
- ▶ Available in white and black
- ▶ UV-stabilized high-density polyethylene
- ▶ Integrated standoffs for easy mounting



ROD HOLDERS & ACCESSORIES

4-ROD DELUXE PONTOON BOAT ROD RACK 23-1/4" P03-074

If having your rods and reels available for quick access on your pontoon boat is important, our TACO Marine 4-Rod Deluxe Poly Road Rack provides the storage you've been looking for.

- ▶ Handles spinning and conventional tackle
- ▶ Stainless-steel fasteners resist rust and corrosion
- ▶ Secure and convenient on-board rod storage
- ▶ Easy assembly



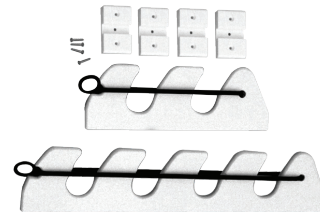
2-, 3-, 4-ROD DELUXE POLY ROD RACK P03-062, P03-063 SERIES, P03-064 SERIES

- ▶ High-polished marine-grade stainless steel Type-316L
- ▶ Patented rod tip holder with spring-lock design locks rods in position
- ▶ Rod hangers feature concealed fasteners
- ▶ Pre-drilled, recessed mounting holes and beveled edges
- ▶ Durable, UV-stabilized white poly racks
- ▶ Weather-resistant, flush mount racks install easily
- ▶ Mount vertically, horizontally and overhead



2-, 3- & 4-ROD BUNGEE ROD HOLDER P03-132, P03-133, P03-134

- ▶ Perfect for under-gunnel rod storage
- ▶ Includes mounting plates and hardware for easy installation
- ▶ Bungee cords keep your rods safe and secure
- ▶ UV-stabilized high-density polyethylene
- ▶ Sold as a pair



SS CLAMP-ON ADJUSTABLE ROD HOLDER FOR 7/8" & 1" TUBE F16-2600

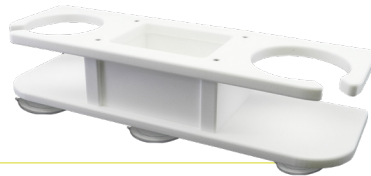
- ▶ Manufactured from Type-316L stainless steel
- ▶ Adjustable clamp with two inserts fits two tube sizes
- ▶ Rotates and lock every 18°
- ▶ Flared opening with I-beam weld pin base
- ▶ Includes form-fitted PVC white liner



CUP HOLDERS & ACCESSORIES

At TACO Marine, we have the answer for your pontoon rod holder and rod storage needs. Our variety of rod holders provide you with the options needed to organize, store and fish efficiently. Additionally, Boaters love our maintenance-free Poly Accessories. These products are made from high-density polyethylene that is built to withstand the harsh marine environment.

2-DRINK POLY HOLDER WITH CATCH ALL P01-2000



- ▶ Hidden fasteners
- ▶ Suction cups included
- ▶ UV-stabilized, high-density white polyethylene
- ▶ Holds full-size insulated drink and/or mug

2 DRINK POLY HOLDER W/ SUCTION CUP MOUNT P01-2001W



- ▶ Hidden fasteners
- ▶ Suction cups included
- ▶ UV-stabilized, high-density white polyethylene
- ▶ Holds full-size insulated drink and/or mug

1-DRINK POLY HOLDER WITH SUCTION CUP MOUNT P01-2003



- ▶ Hidden fasteners
- ▶ Suction cups included
- ▶ UV-stabilized, high-density white polyethylene
- ▶ Holds full-size insulated drink and/or mug

1-TUMBLER POLY HOLDER P01-2010



- ▶ Includes suction cups
- ▶ Dual drain holes on recessed bottom
- ▶ Patent-pending mobile phone holder design
- ▶ Holds tumbler at proper height to prevent tipping
- ▶ UV-stabilized high-density black or white polymer
- ▶ Single holder holds one 16- to 30-ounce tumbler
- ▶ Includes mobile device cutout and charging cable port

2-TUMBLER POLY HOLDER P01-2020



- ▶ Includes suction cups
- ▶ Dual drain holes on recessed bottom
- ▶ Patent-pending mobile phone holder design
- ▶ UV-stabilized high-density black or white polymer
- ▶ Double holder holds two 16- to 30-ounce tumblers
- ▶ Holds tumbler at proper height to prevent tipping
- ▶ Includes mobile device cutout and charging cable port

COME ON BOARD HANDLE - ROD HOLDER MOUNT F16-0810



- ▶ Enables easy boarding with large, sturdy grabbing surface
- ▶ Type-304 stainless steel
- ▶ Unique finger-molded groove handle for comfortable grip
- ▶ 1-1/2" tube DIA fits standard rod holders 1-5/8" DIA
- ▶ Solid gimbal mount design for easy storage

TRITON 3-STAGE ADJUSTABLE TABLE PEDESTAL SYSTEM

Boaters can entertain with confidence while enjoying the versatility and easy adjustability of our Triton 3-Stage Adjustable Table Pedestal. Its quality construction and smooth operation provides years of trouble-free use.

- ▶ Complete assembly for both deck or thru-floor mounting
- ▶ Three tapered columns offer added strength and height adjustments from 14-1/8" to 28"
- ▶ Gas shock provides smooth operation of column adjustment
- ▶ Stainless steel one-motion clamping mechanism provides secure lock
- ▶ Keyed columns prevent rotation
- ▶ Precision engineering with Delrin bearings for smooth trouble-free operation
- ▶ Smooth, satin-anodized finish on columns



2-STAGE ADJUSTABLE TABLE PEDESTAL SYSTEM

The ability to precisely and easily adjust your cruiser's table is important when entertaining guests, having dinner or just boating down the waterway. The Power-Matic gas-assisted cylinders are the driving force behind these specific adjustments in our 2-Stage Adjustable Table Pedestal System. Not only does this system provide the freedom of perfect adjustments, its ability to be easily removed and stowed is perfect for saving space and time.

- ▶ Easily adjustable height range from 12-5/8" to 32-1/2"
- ▶ Gas shock provides smooth operation of column adjustment
- ▶ Stainless steel one-motion clamping mechanism provides secure lock
- ▶ Precision engineering with Delrin bearings for smooth, trouble-free operation
- ▶ Choose from an aluminum surface or flush mount table base



FIXED HEIGHT TABLE PEDESTAL SYSTEM 2-3/8" DIA

For smaller cruising vessels, the need to maximize space is critical. With our 3-piece 2-3/8" Fixed Height Table Pedestal System, we've created the right look, feel and functional products to fill this need. Our precise engineering and high-end materials provide the quality you need and expect from TACO.

- ▶ Choose from either ribbed or smooth column design in aluminum satin-anodized finish
- ▶ Available base options include a surface mount table pedestal, a flush mount table base or a low-profile flush mount table base
- ▶ All base options are aluminum and brite-anodized finished



FIXED HEIGHT TABLE PEDESTAL SYSTEM 3" DIA

Our 3-piece 3" Fixed Height Pedestal System provides a wide array of base options to cover most applications. All bases are designed to accept the innovative tapered column for convenient removal and storage. Pedestals can be engineered and manufactured to your exact specifications.

- ▶ Choose from either ribbed or smooth column design in aluminum satin-anodized finish
- ▶ Available base options include a surface mount table pedestal, a flush mount table base or a low-profile flush mount table base
- ▶ All base options are aluminum and brite-anodized finished
- ▶ Also available in a polished stainless steel version with a flush mount table base



Polished Stainless Steel Flush Mount Table Base
Z10-4097

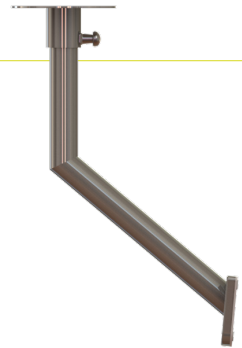
REMOVABLE SIDE MOUNT TABLE PEDESTAL SYSTEM

With its classy stainless steel appearance, the Removable Side Mount Table Pedestal System is ideal for mounting in various locations throughout the boat.

REMOVABLE SIDE MOUNT TABLE SUPPORT ARM F16-0005A

This Stainless Steel Side Mount Table Pedestal is ideal for limited space in the interior and exterior of a boat. The 125-degree leg is easy to remove for storage and security, and features a locking pull pin for added mounting strength.

- ▶ Easy to remove for clear passage and storage
- ▶ Manufactured from marine-grade 316L stainless steel
- ▶ Removable 125° bent leg



STAINLESS STEEL TABLE SUPPORT WITH LOCKING PULL PIN F16-0006L

For the Side Mount Table Pedestal System, we manufacture a stainless-steel table support with a locking pull pin for added mounting strength.

- ▶ Easy to remove for clear passage and storage
- ▶ Locking pull pin offers added mounting strength
- ▶ Polished stainless steel



REMOVABLE SIDE MOUNT BRACKET F16-0080

For the Removable Side Mount Table Pedestal System, we manufacture the Stainless Steel Mounting Bracket from 316L marine-grade stainless steel.

- ▶ Manufactured from marine-grade 316L polished stainless steel



TABLE COLUMN WEDGE PLATE F40-0018

Designed as a backing plate/wedge plate for the Removable Side Mount Table Pedestal System.



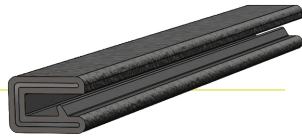
FLEX TRIM



Cover unfinished material edges with our contour-hugging Flex Trim. Manufactured from high-quality, marine-grade flexible PVC with internal aluminum clips and a gripping tongue, our Flex Trim molds to almost any contour and radius to provide a beautiful, durable finish. Available in black or white textured finish. Custom sizes can be special ordered with 500' minimum quantity.

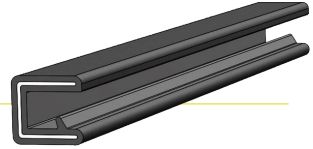
5/32" X 9/16"

V30-1005



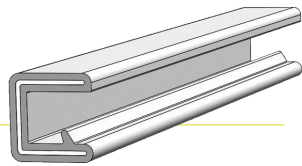
1/4" X 1/2"

V30-1008



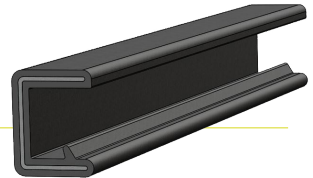
3/8" X 5/8"

V30-1312



1/2" X 5/8"

V30-1316

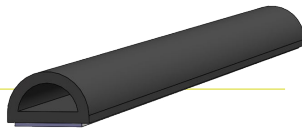


WEATHER SEAL

Prevent leaks and reduce rattling with our Weather Seal and Hatch Tape products. Made from the highest-quality synthetic rubber and rubber compounds, our Weather Seal absorbs shock and offers superior resistance to water absorption, sunlight damage and extreme temperatures. Our Hatch Tape creates a tight, rattle-free seal and the adhesive backing makes for convenient, easy installation.

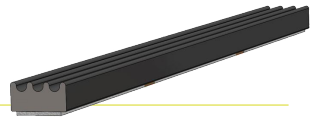
3/8" X 5/8"

V30-0109



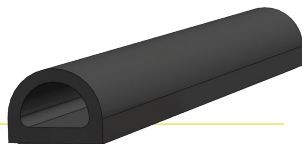
3/16" X 3/8"

V30-0113



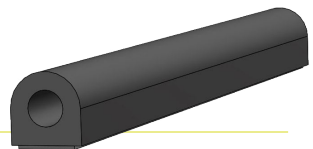
9/16" X 3/4"

V30-0135



1/2" X 1/2"

V30-0202





PATRICK

**EMPOWERING
ENTHUSIASTS**

Explore our complete line of Pontoon products on our website.

[TACOMARINE.COM](https://www.tacomarine.com)

   [@tacomarine](https://www.facebook.com/tacomarine)  [@taco_marine](https://www.twitter.com/taco_marine) [#TACOMARINE](https://www.instagram.com/tacomarine)

2024 V1